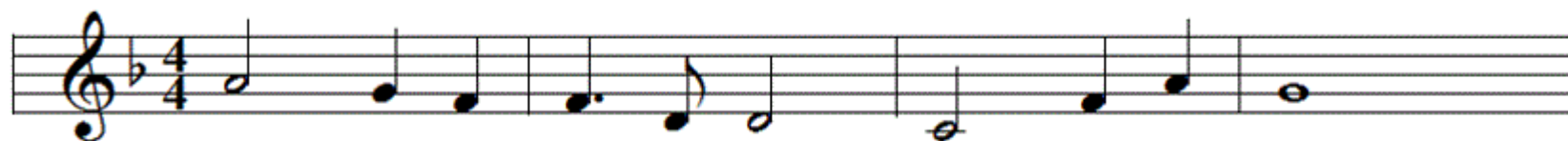


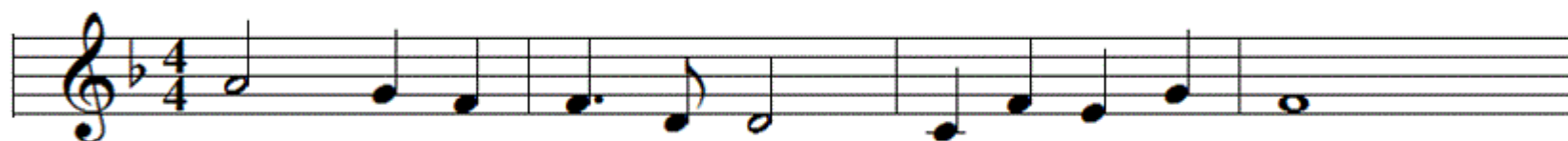
CLOSING THE LODGE (p. 8)

Music.—“*Nearer, my God, to Thee.*”

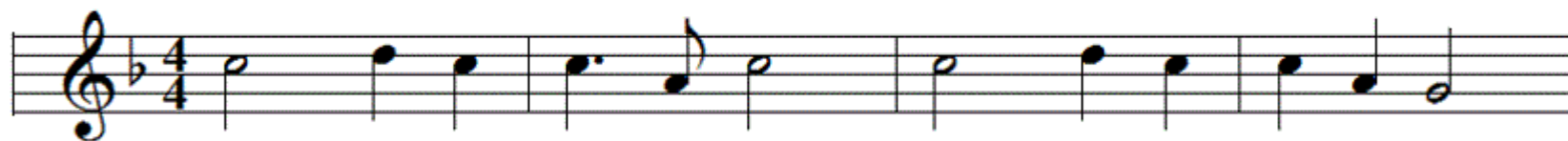
Opening Pitch: G or A



1) Bro - thers, we meet a - gain, Too soon to part;
2) Bro - thers, once more fare - well! Time bids us part;



May Friend-ship bless This hour, And warm each heart;
Fond mem - 'ry long shall dwell A - round each heart;



Tones that we love to hear, Shall dwell u - pon the ear,
May Heav'n its bless - ings send, And peace our paths at - tend;



As we in ac - cents clear, re - peat, Good Night.
Unt - il we meet a - gain, Fare - well. Good Night.